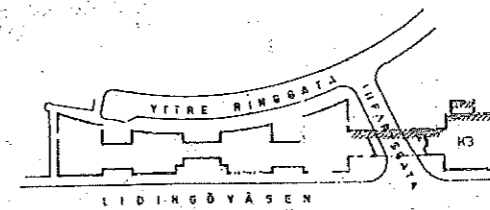


FASAD MOT RINGGATA / STUDENTHUS

BYGGLOVSHANDLING

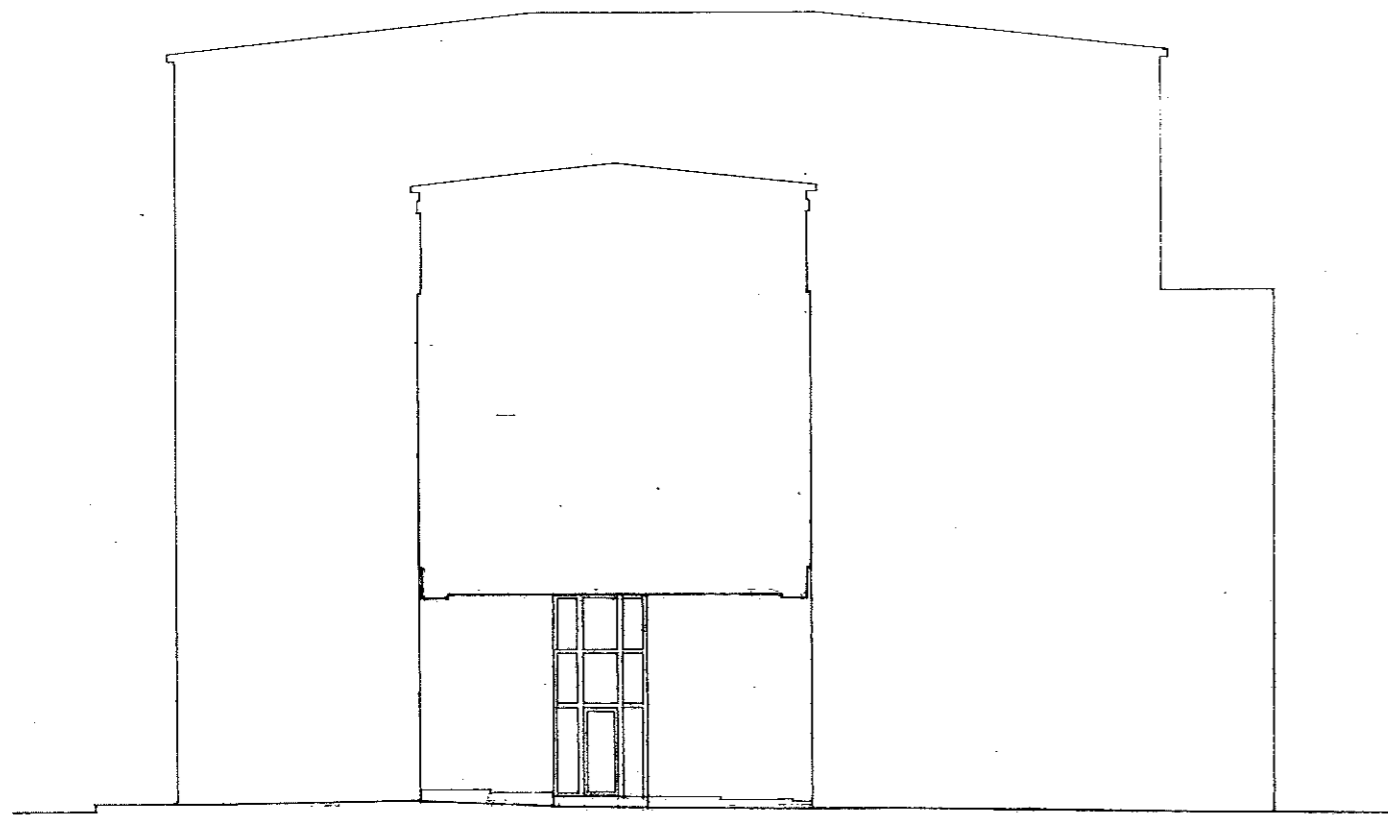


REV B ALLM REV 90-05-21
 REV A: DÖRRAR, FÖNSTER 90-01-15

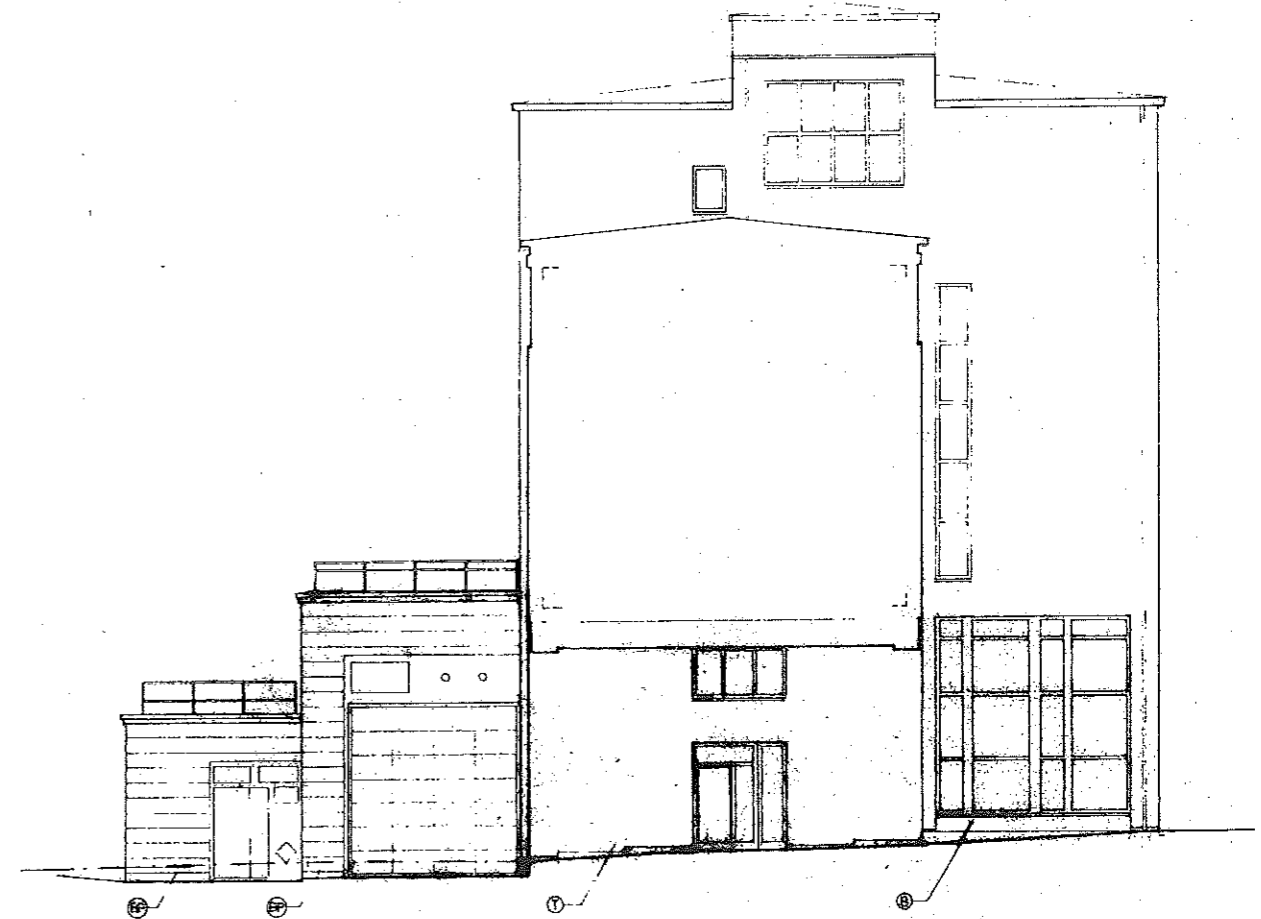
STARRBÄCKSÄNGEN

NYRÉN S
 arkitektkontor ab
 Adress: Box 1258 - S-111 62 Stockholm
 Telefon 08 481 7 - Övrigt 08 - 74 02 14 91 92
 KONTORSHUS K3 FASTIGHET FIC
 FASAD MOT RINGGATA/STUDENTHUS

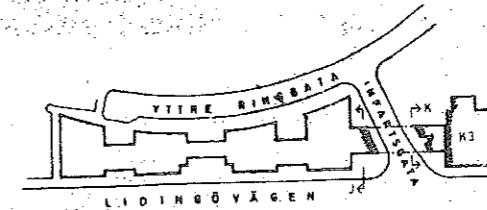
SKALA 1:100
 DATUM 89 10 27
 A 313
 KAPITEL ES



FASAD J - MOT INFARTSGATAN



FASAD K



BYGGLOVSHANDLING

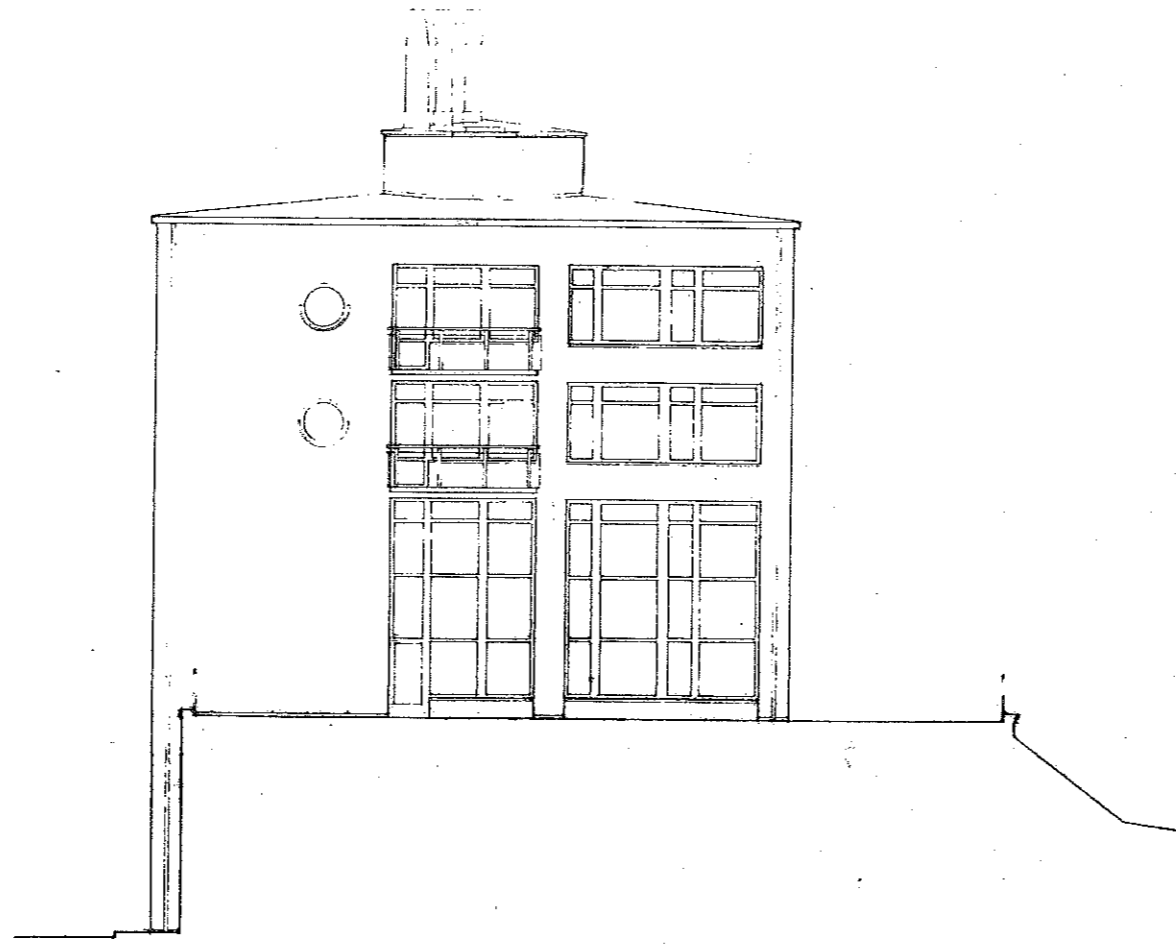
REV. A. ALLM. REV. 90-05-21

STARRBÄCKSÅNGEN



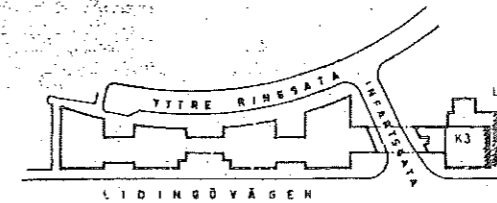
NYRÉN'S
arkitektkontor ab
Prästgatan 10, 115 20 Stockholm
Tel: 08 44 11 69
KONTORSHUS K3, FASTIGHET F10
FASAD J OCH K, MOT INFARTSGATAN

SKALA 1:100 DATUM 89 10 27 A 314
FÖRSTA TP ES



FASAD L - MOT SKOLAN

BYGGLOVSHANDLING



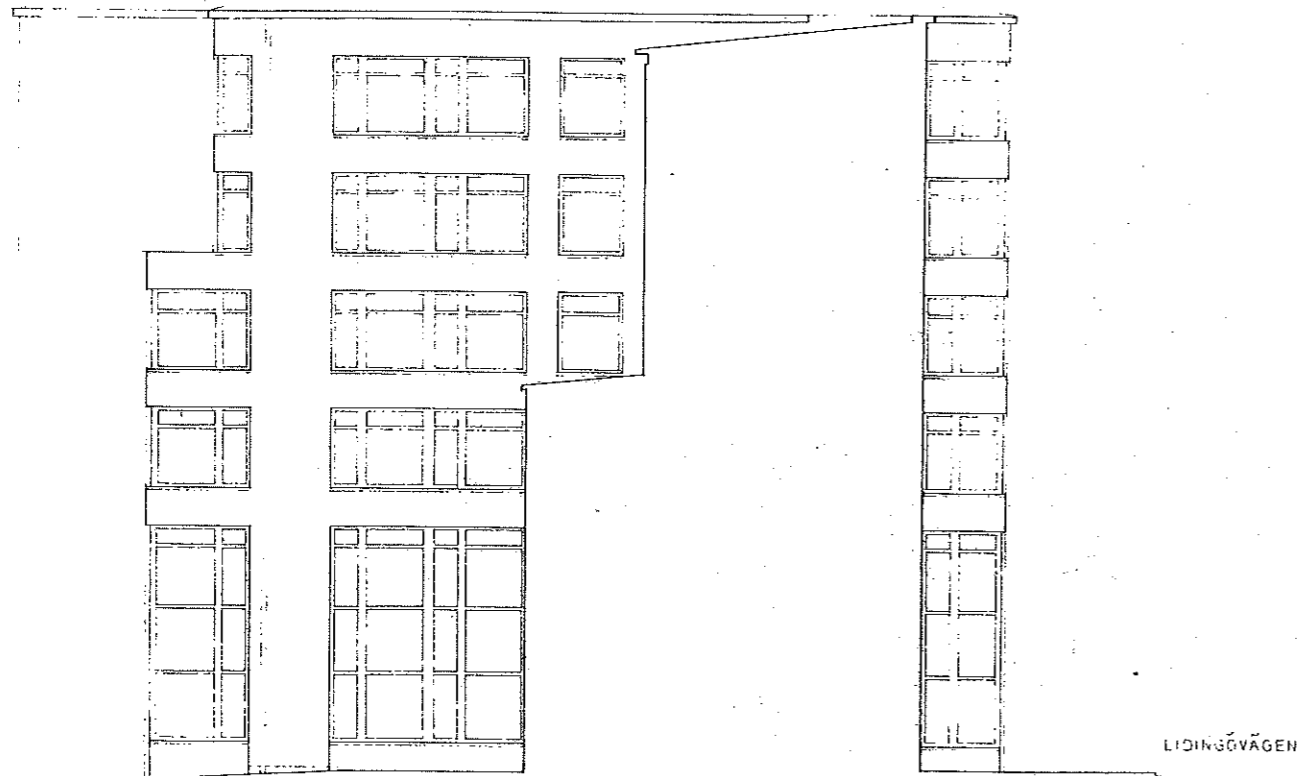
REV. A: ALLM. REV. 90-05-21

STARRBÄCKSÅNGEN

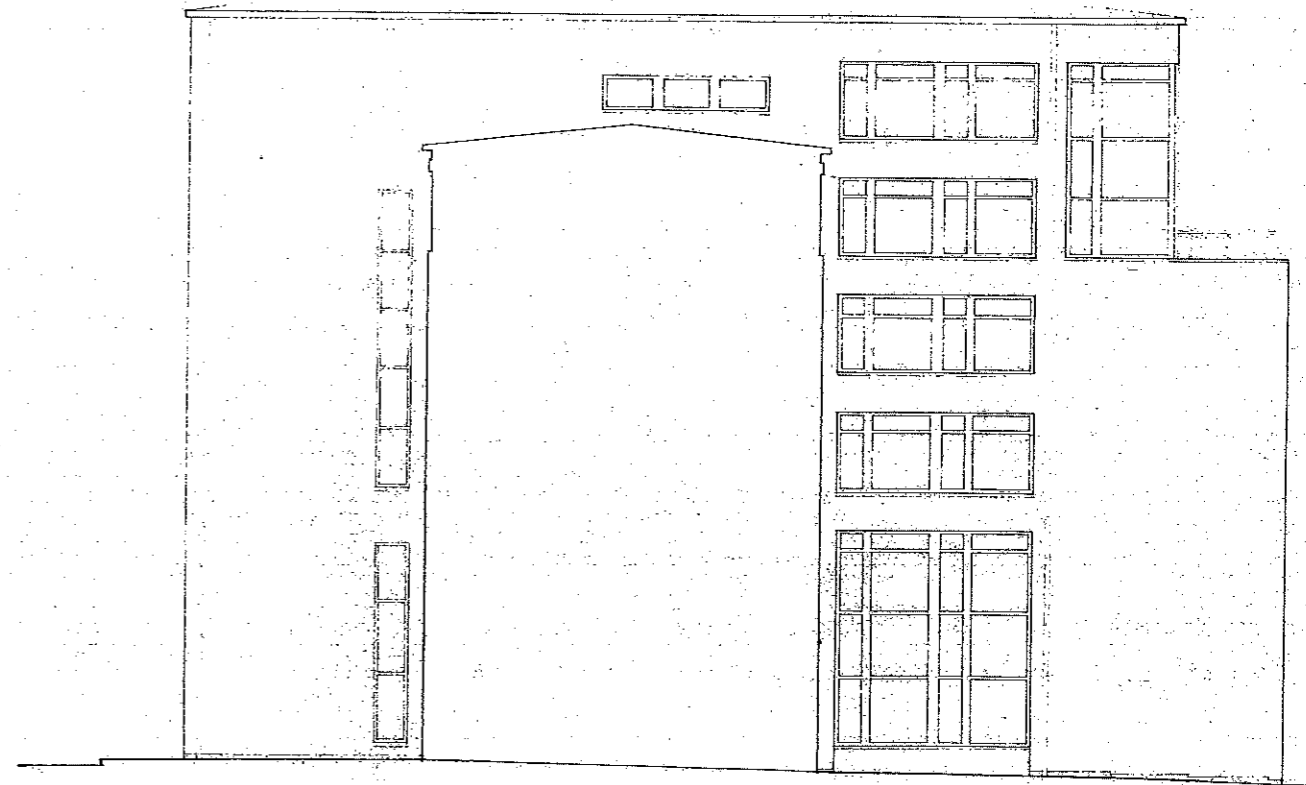


NYRÉN'S
arkitektkontor ab
Peredömsvägen 1250 · S-111 87 Stockholm
Förteckningsadress: Gårdsplan 3 · Gårdsplan · S-111 20
KONTORSHUS K3 · FASAD L · MOT SKOLAN

SKALA 1:100 DATUM 89 10 27 A.315
HANDL. TP FS

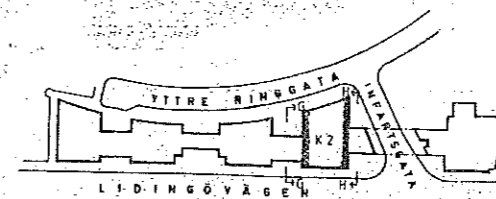


FASAD G - MOT ENHÄGÅRD

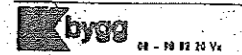


FASAD H - MOT INFARTSGATA

RELATIONSHANDLING



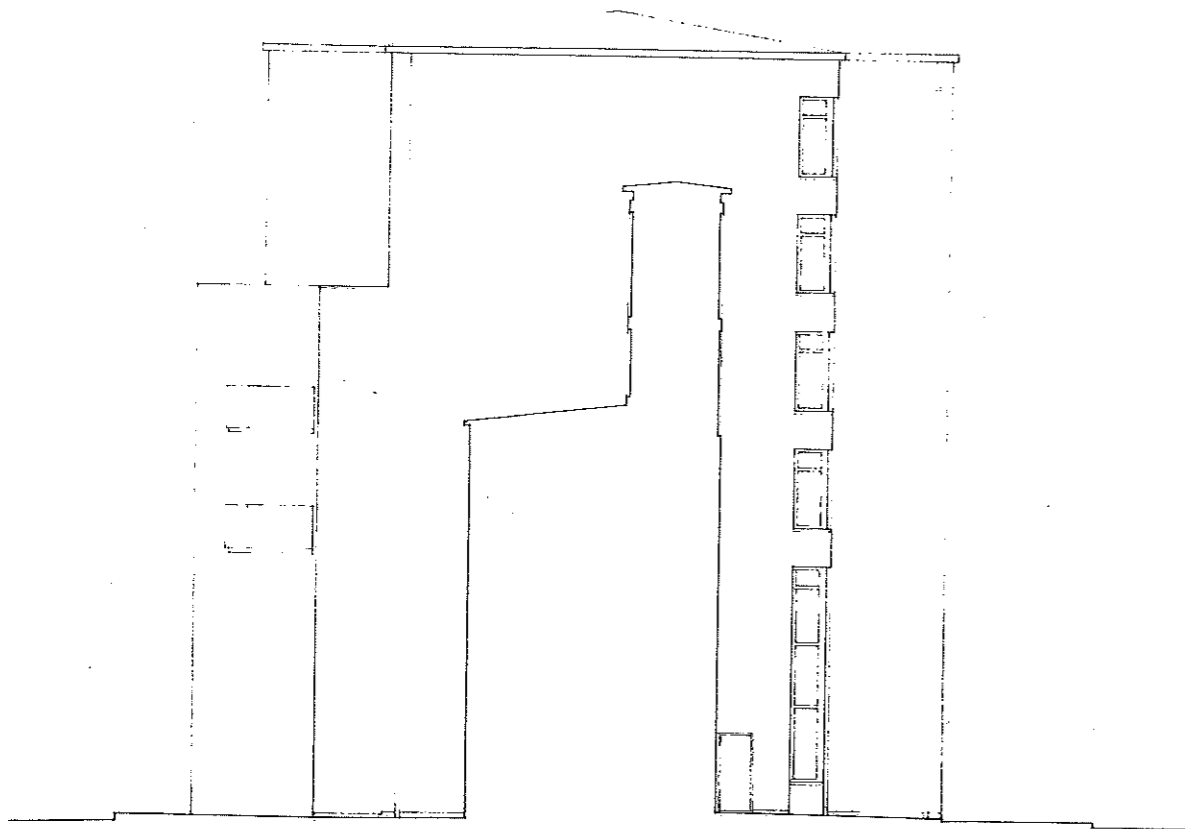
STARRBACKSÅNGEN



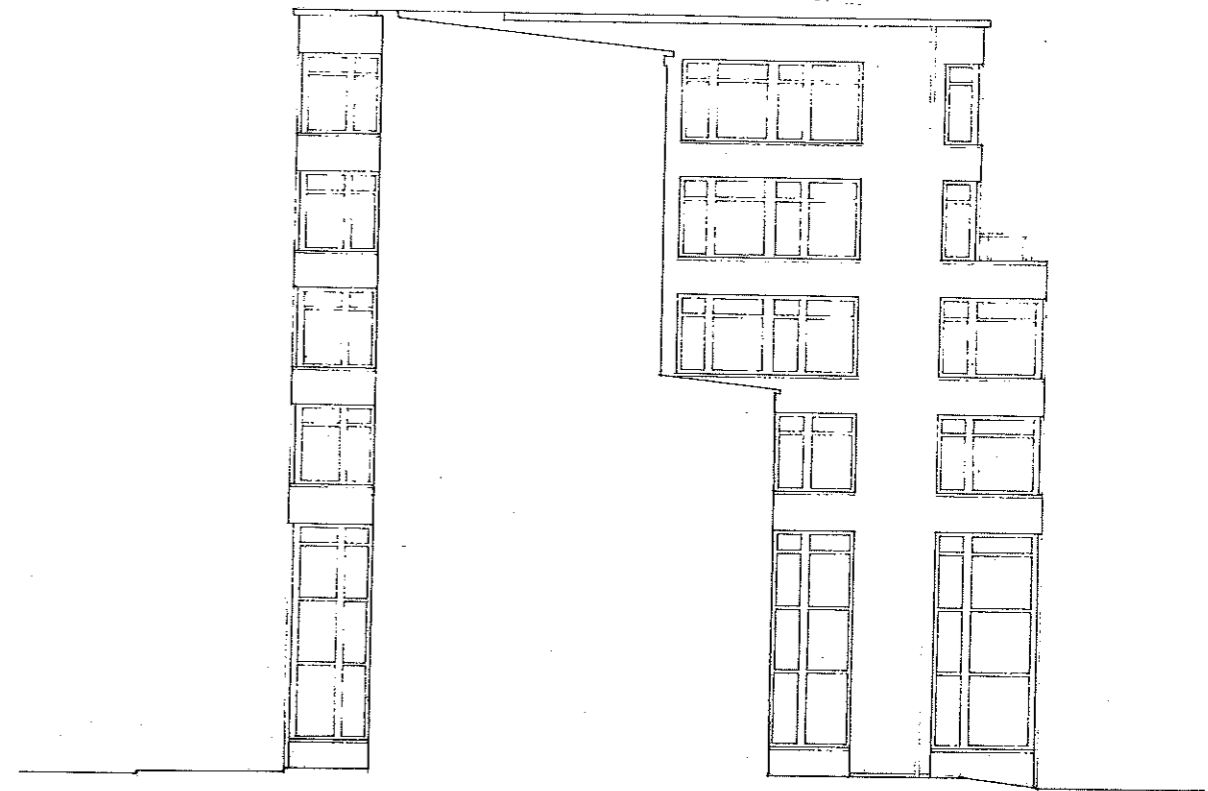
NYRÉN S
arkitektkontor ab

Populavägen 115A - S-11183 Stockholm
 Telefon 08 73 13 00 / Fax 08 73 13 24 50
 KONTORSHUS K2 FASTIGHET F8
 FASAD G - MOT ENHÄGÅRD
 FASAD H - MOT INFARTSGATA

SKALA 1:100 DATUM 9/10/25 A 2216
 HANDLTP ES

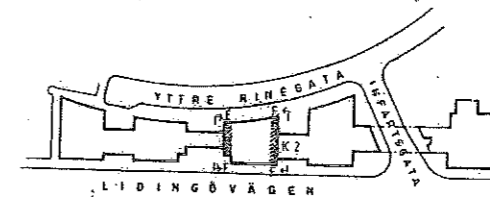


FASAD E - MOT LÄNK

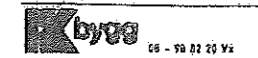


FASAD F - MOT ENTRÉGÅRD

RELATIONSHANDLING



STARRBÄCKSÄNGEN



NYRÉN S
arkitektkontor ab

Fasadadress: Box 1290 • S-111 02 Stockholm
Förhållningsadress: Göstas väg • Tel. 08-98 82 20 04

KONTORSHUS K2 - FASTIGHET F8

FASAD E - MOT LÄNK

FASAD F - MOT ENTRÉGÅRD

SKALA 1:100 DATUM 91-10-25 A 2215

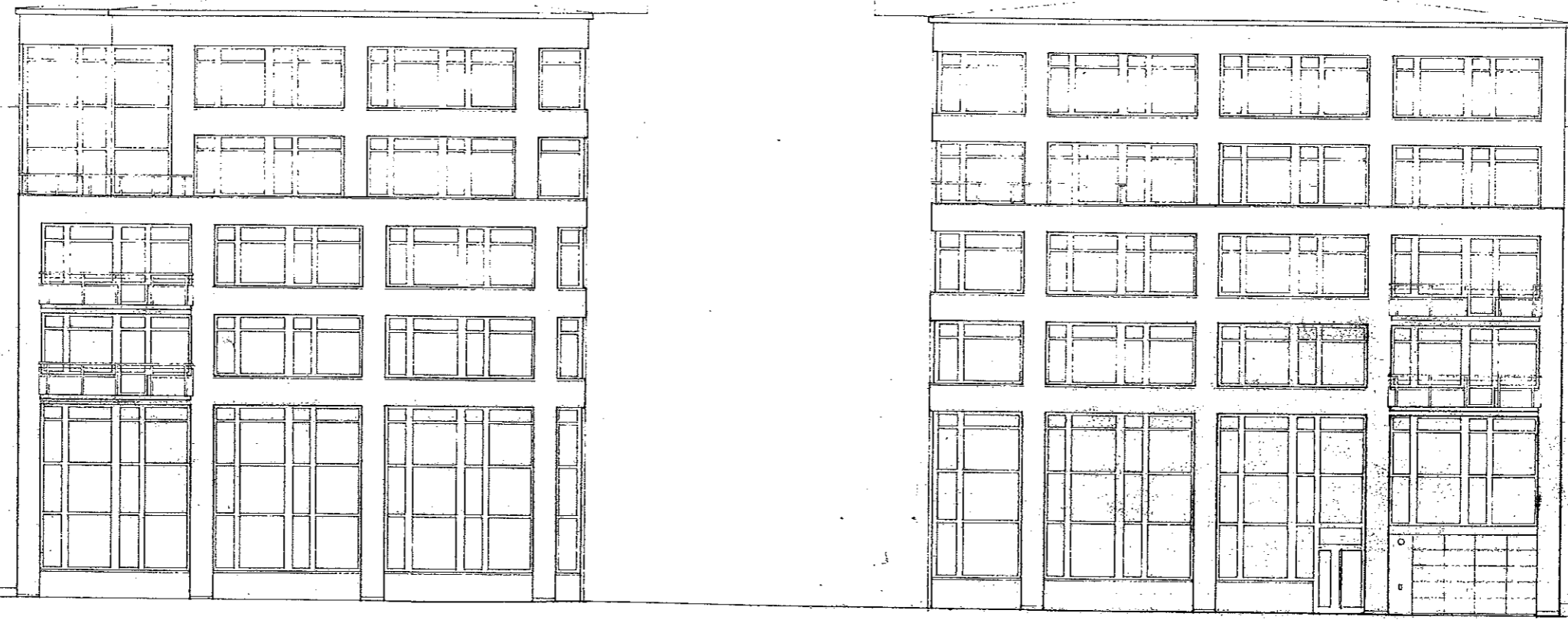
TEGEL TP ES

K3 K2

K2 K1

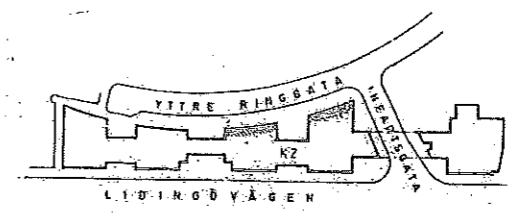
+ 39,8

+ 33,3



FASAD MOT RINGGATA

RELATIONSHANDLING



STARRBÄCKSÅNGEN

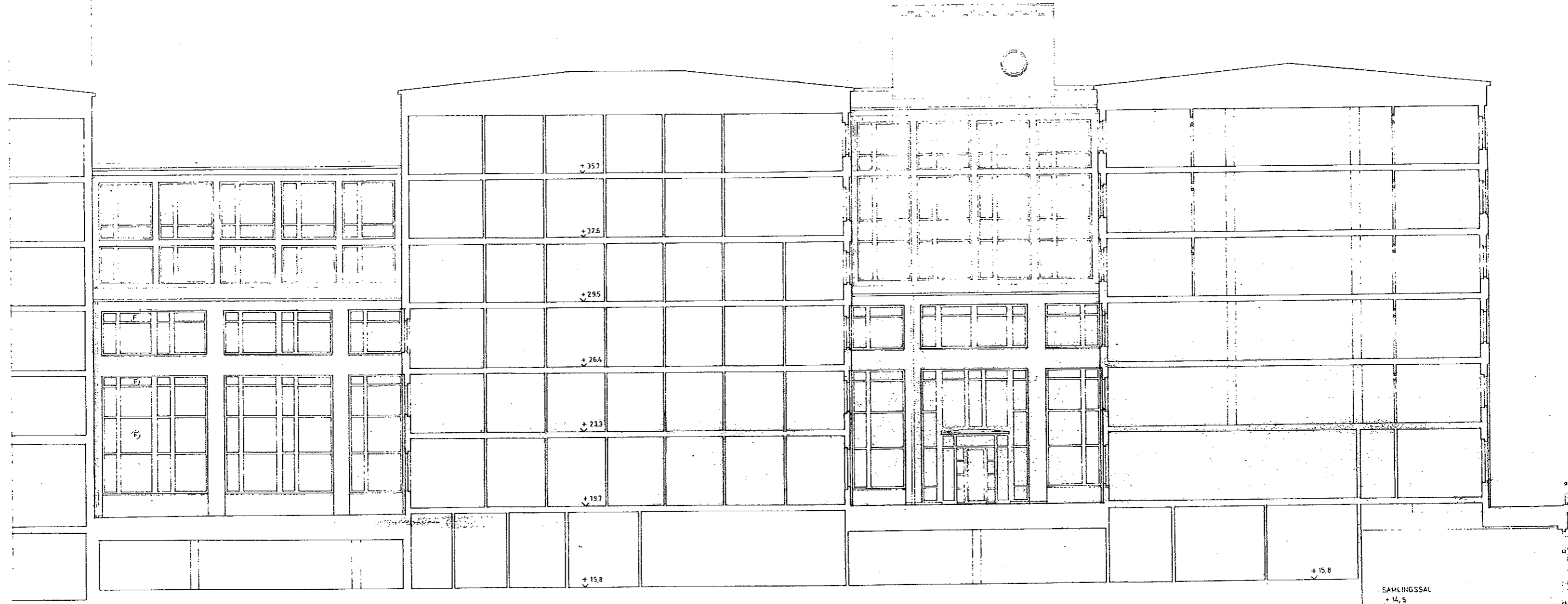


NYRÉNS
 arkitektbyrå
 KONTORSHUS K2 FASTIGHET FB
 FASAD MOT RINGGATA

SKALA 1:100
 DATUM 91-10-25
 RITAD TP:ÉS

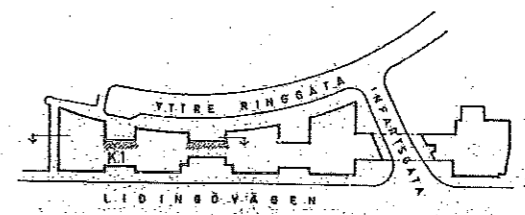
A 22 13

K2 K1



FASAD MOT GÅRDAR

RELATIONSHANDLING



STARRBÄCKSÅNGEN

bygg 05 - 22 02 23 VA

NYRÉN S
arkitektkontor AB
Fornbrunn, Box 1250 · 511 02 Stockholm
Tel: 08 34 14 24 30

KONTORSHUS KT FASTIGHET F11
FASAD MOT GÅRDAR

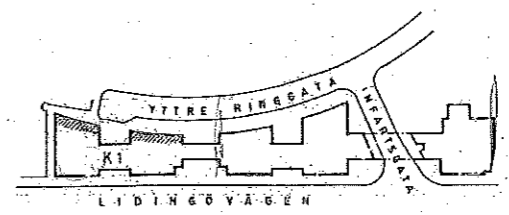
SKALA 1:100 DATUM 91-10-25 A1115
MÅST. TP ES

K2 K1

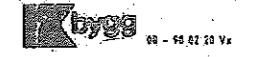


FASAD MOT RINGGATA

RELATIONSHANDLING

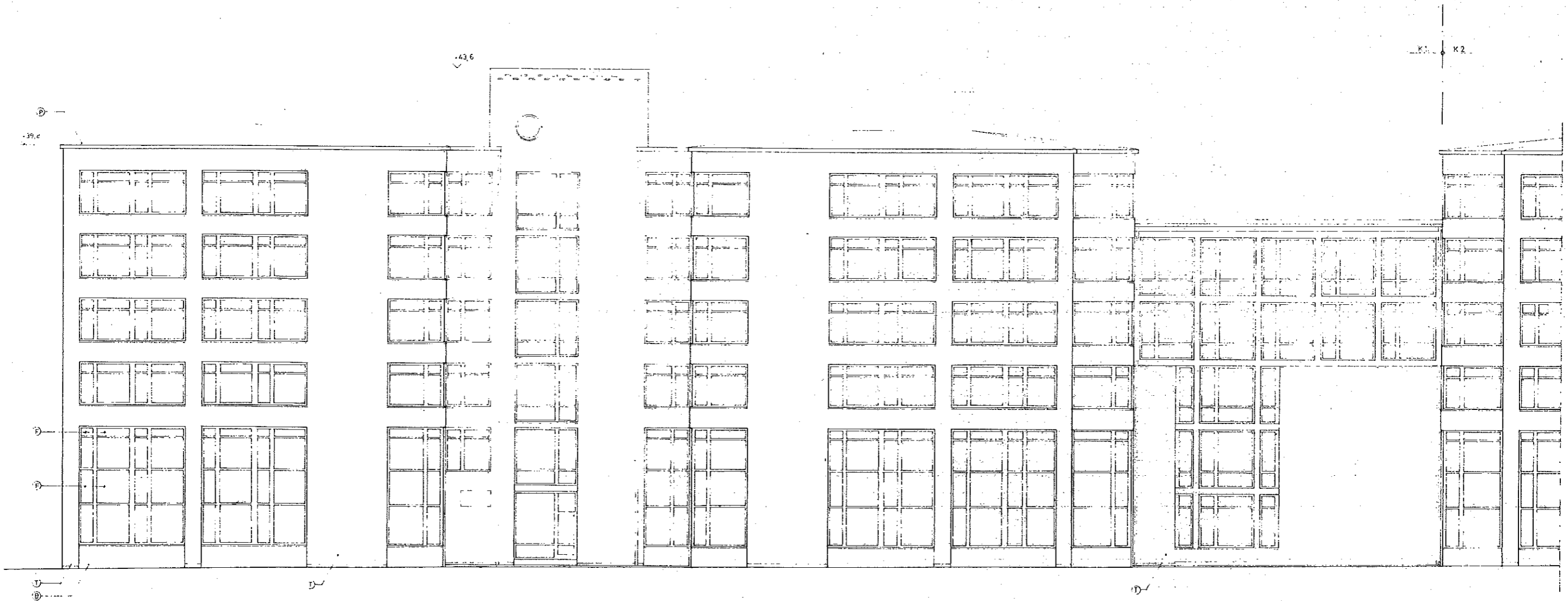


STARRBÄCKSÅNGEN



NYRÉN S
 arkitektkontor ab
 Perstjärnan, Box 1750 • S-111 07 Stockholm
 Telefon: 08 95 02 20 • Fax: 08 95 02 20 99
 KONTORSHUS KL FASTIGHET FH
 FASAD MOT RINGGATA

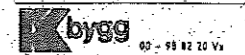
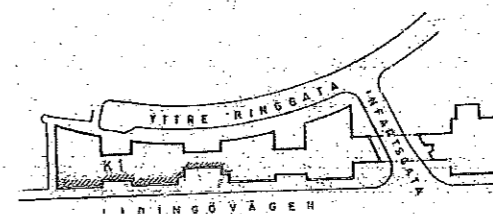
SKALA 1:100 DATUM 91-10-25 A1114
 RÄSKÖRNING ES ANSVÄRIG *M. Larsson*



FASAD MOT LIDINGÖVÄGEN

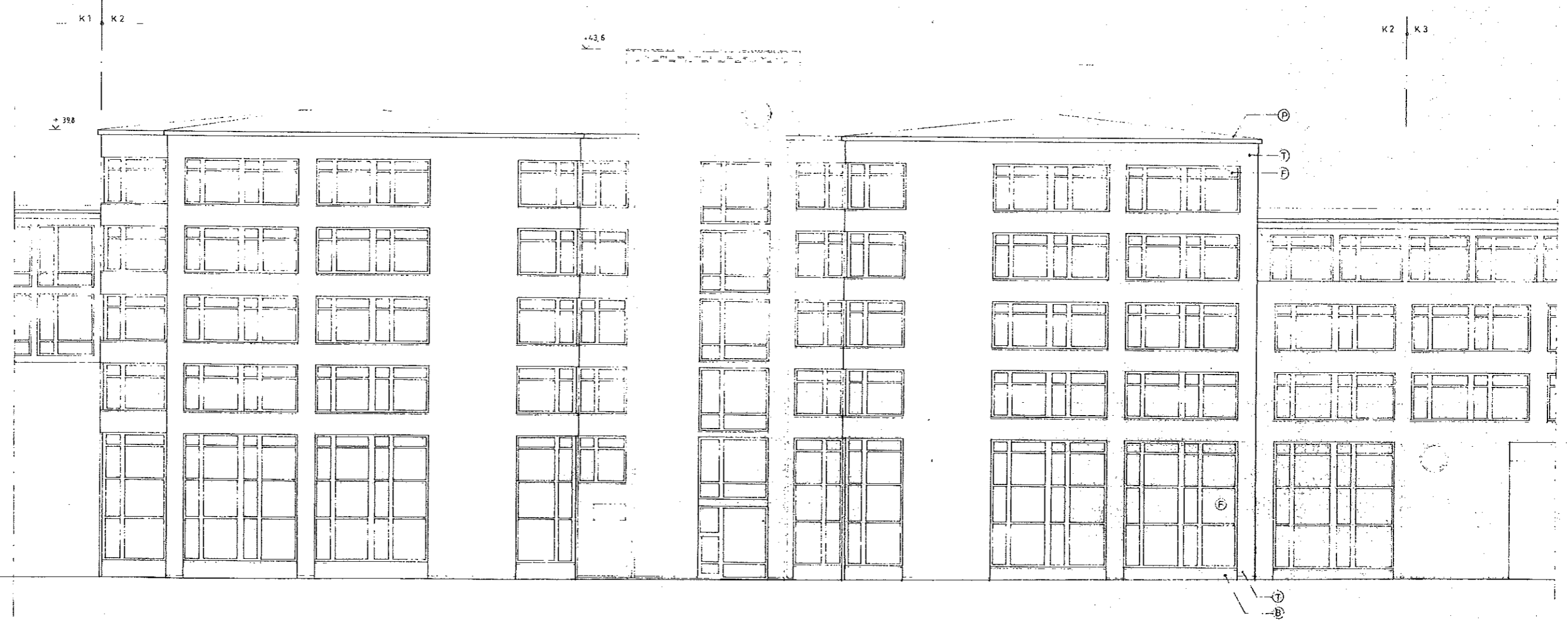
RELATIONSHANDLING

STARRBÄCKSÄNGEN



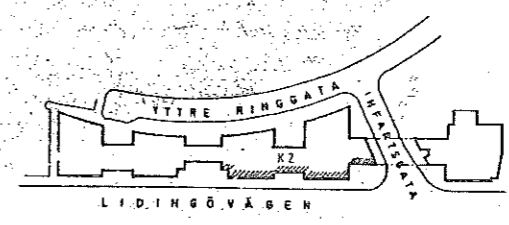
NYRÉN S
 arkitektkontor och
 Fastigheter Box 1230 - S-111 87 Stockholm
 Telefon 08 23 12 24 50
 KONTORSHUS K1 - FASTIGHET F11
 FASAD MOT LIDINGÖVÄGEN

SKALA 1:100 DATUM 91-10-25 A1113
 HANDL 1988



FASAD MOT LIDINGÖVÄGEN

RELATIONSHANDLING



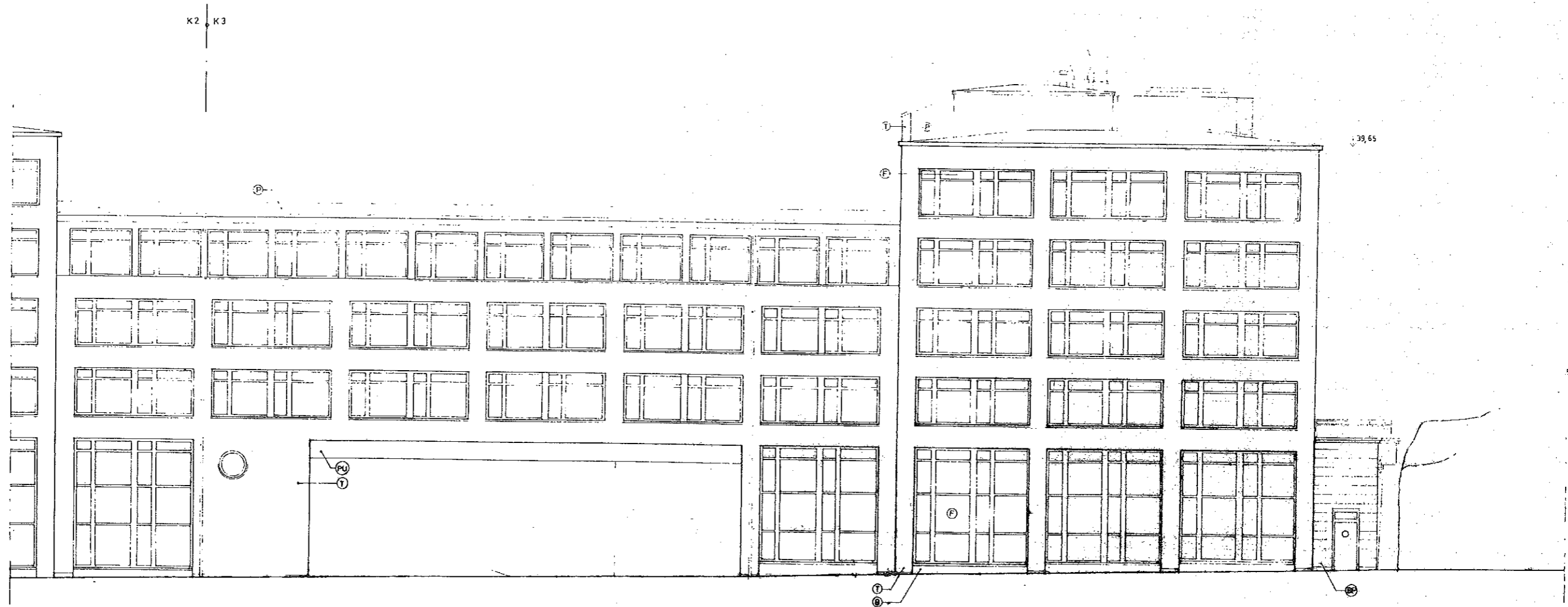
STARRBÄCKSÄNGEN

bygg
08 - 58 82 20 Vx

N.YRÉN S
arkitektkontor AB
Fossholms väg 1250 · S-111 62 Stockholm
Farkens gränd 2 · Gäddede stan · Tel. 08-34 24 58

KONTORSHUS K2 FASTIGHET F8
FASAD MOT LIDINGÖVÄGEN

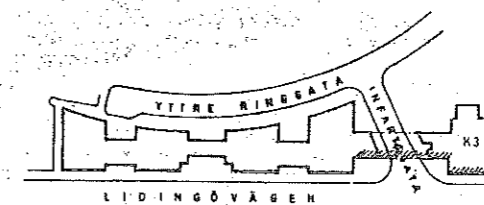
SKALA: 1:100 DATUM: 91-10-25 A2212
HANDL: TPES



FASAD MOT LIDINGÖVÄGEN

REV. A ALLM REV 90-05-21

BYGGLOVSHANDLING

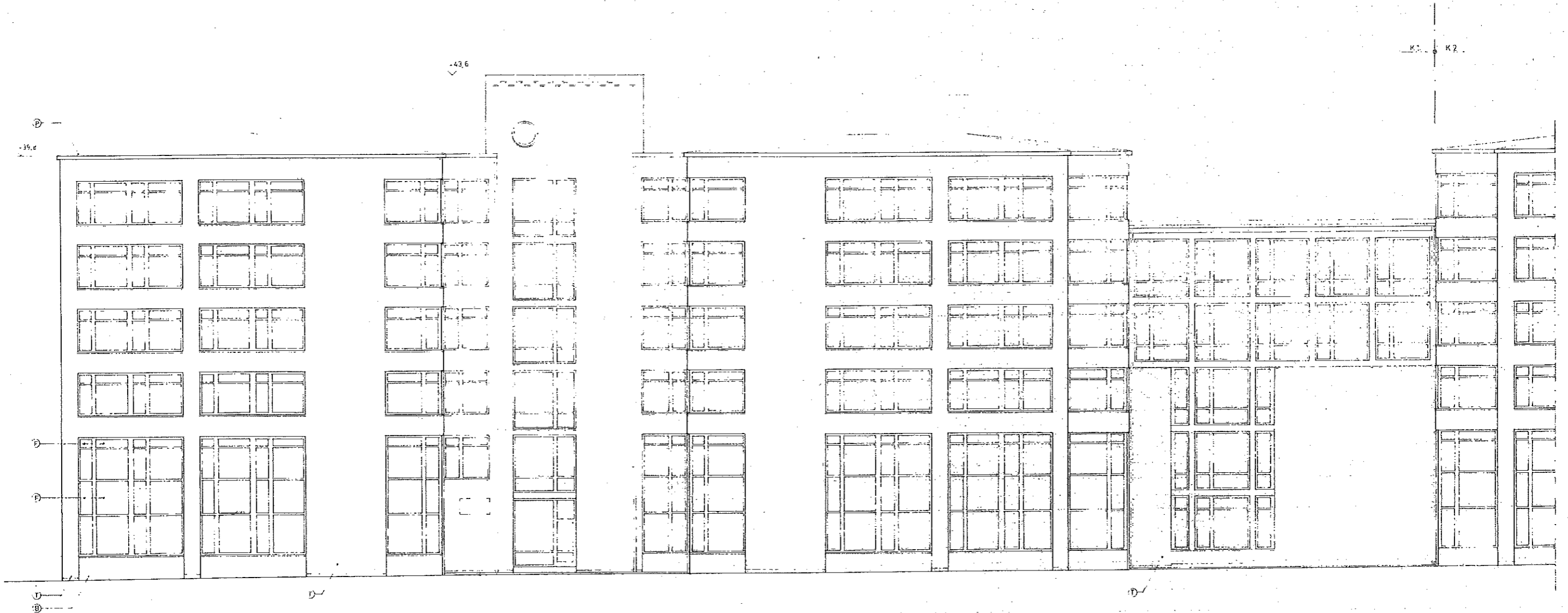


STARRBÄCKSÄNGEN



NYRÉNS
arkitekter ab
Perseusväg, Båda 1259 • S-111 62 Stockholm
Förteckningsblad 3 - Grundskolan • Tel. 80 34 24 90
KONTORSHUS K3 FASTIGHET F10
FASAD MOT LIDINGÖVÄGEN

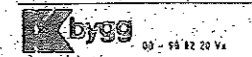
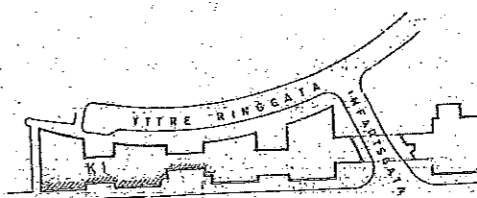
SKALA 1:100 DATUM 89 10 27 A 312
MÅTTET. ES



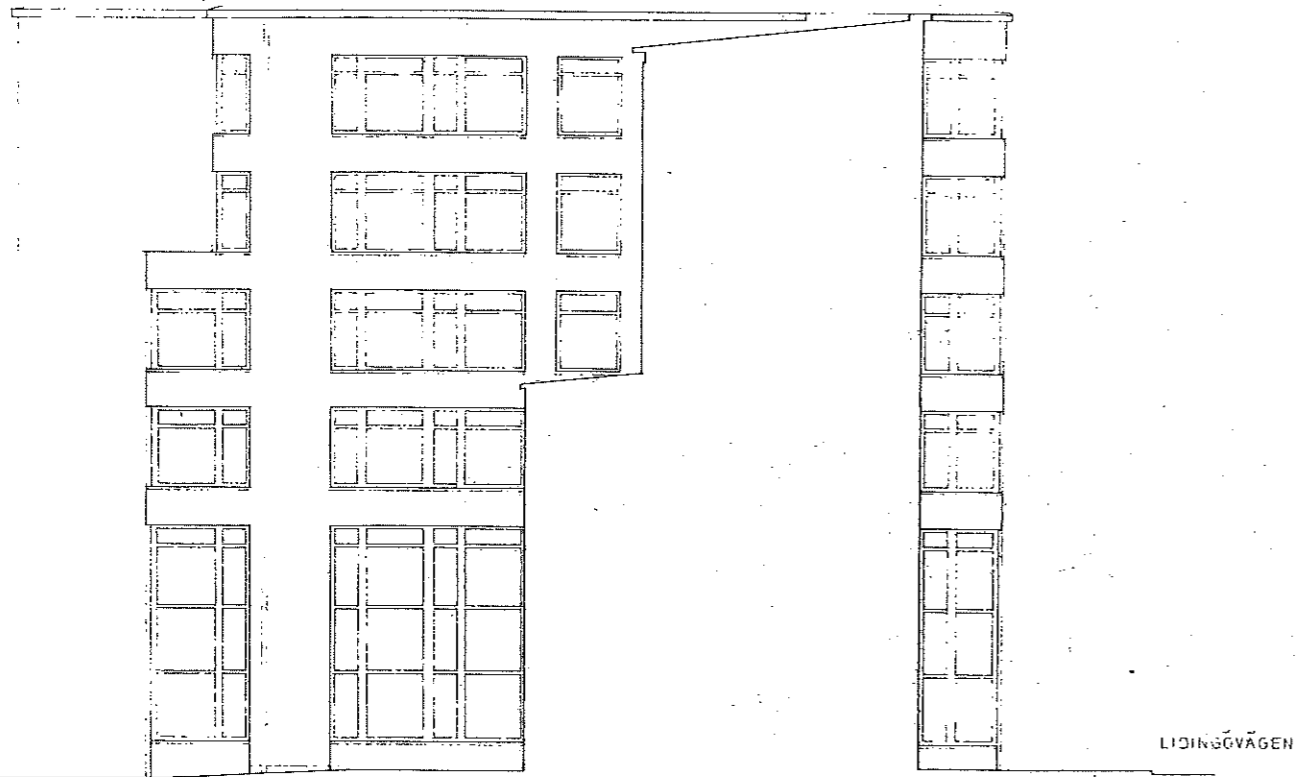
FASAD MOT LIDINGÖVÄGEN

RELATIONSHANDLING

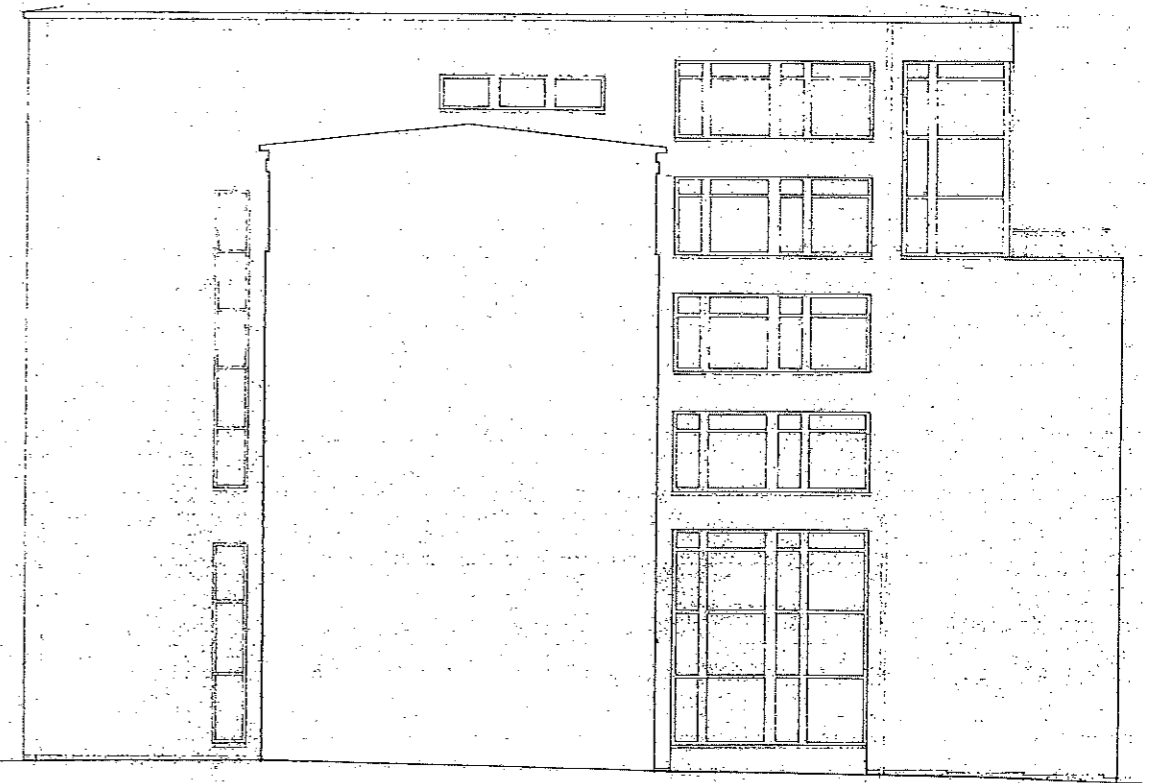
STARRBÄCKSÅNGEN



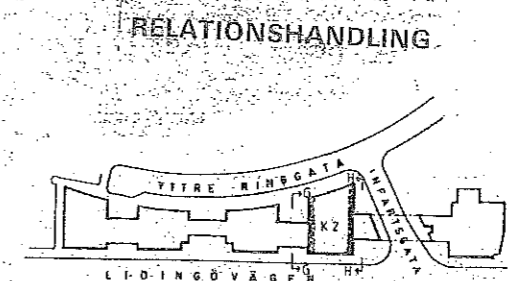
N. Y. R. E. N. S
 arkitektkontor ab
 Fackadress: Box 1250 • S-111 82 Stockholm
 Ferkontogård 3 • Östra Hamnen • Tel. 08-142450
 KONTORSHUS K1 • FASTIGHET F11
 FASAD MOT LIDINGÖVÄGEN



FASAD G - MOT ENTRÉSGÅRD

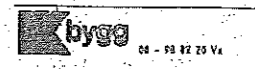


FASAD H - MOT INFARTSGATA



RELATIONSHANDLING

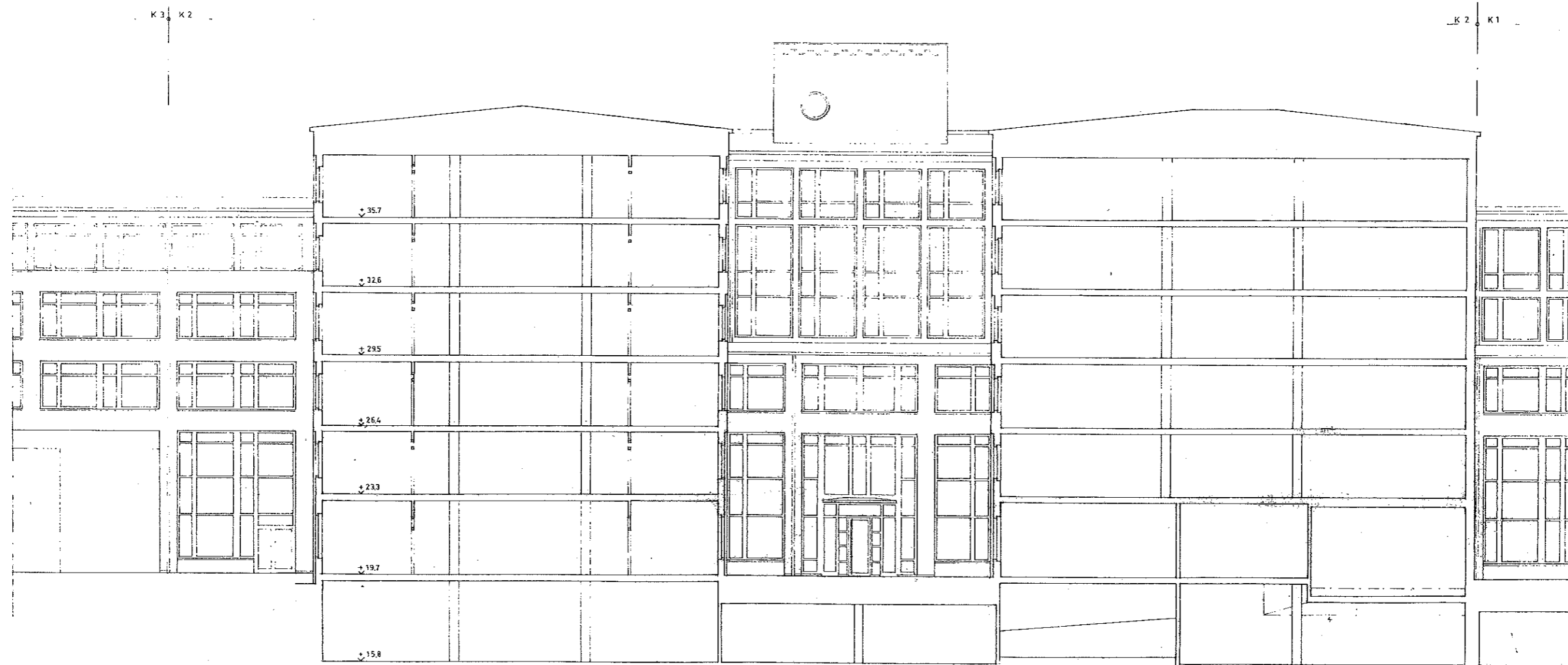
STARRBACKSÅNGEN



N Y R É N S
arkitektkontor ab

Per Adress: Box 1250 - S-111 07 Stockholm
Förhållningsgränd 2 Östermalm - Tel. 08-14 24 50
KONTORSHUS K2 FASTIGHET F8
FASAD G - MOT ENTRÉSGÅRD
FASAD H - MOT INFARTSGATA

SKALA: 1:100 DATUM: 91.10.25 A 2216

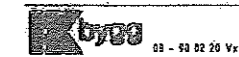


FASAD MOT INFARTSGATA

FASAD MOT GÅRD

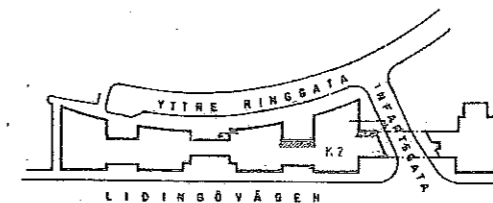
RELATIONSHANDLING

STARRBÄCKSÄNGEN

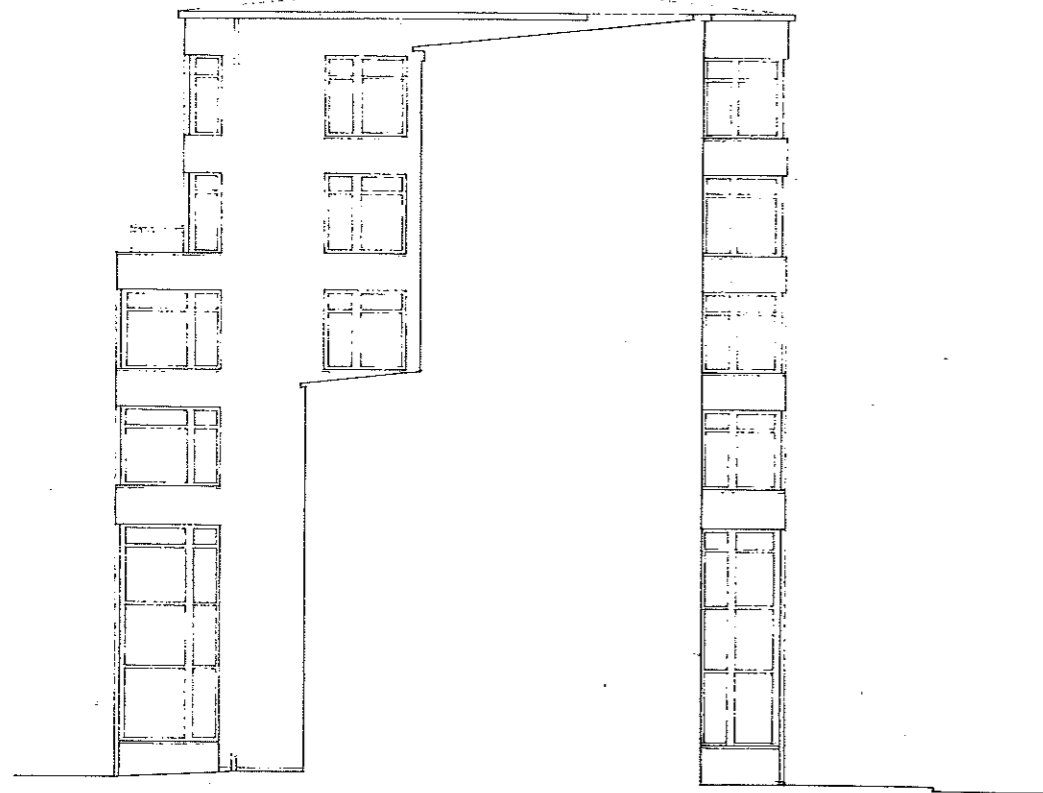


NYRÉN S
arkitektkontor ab

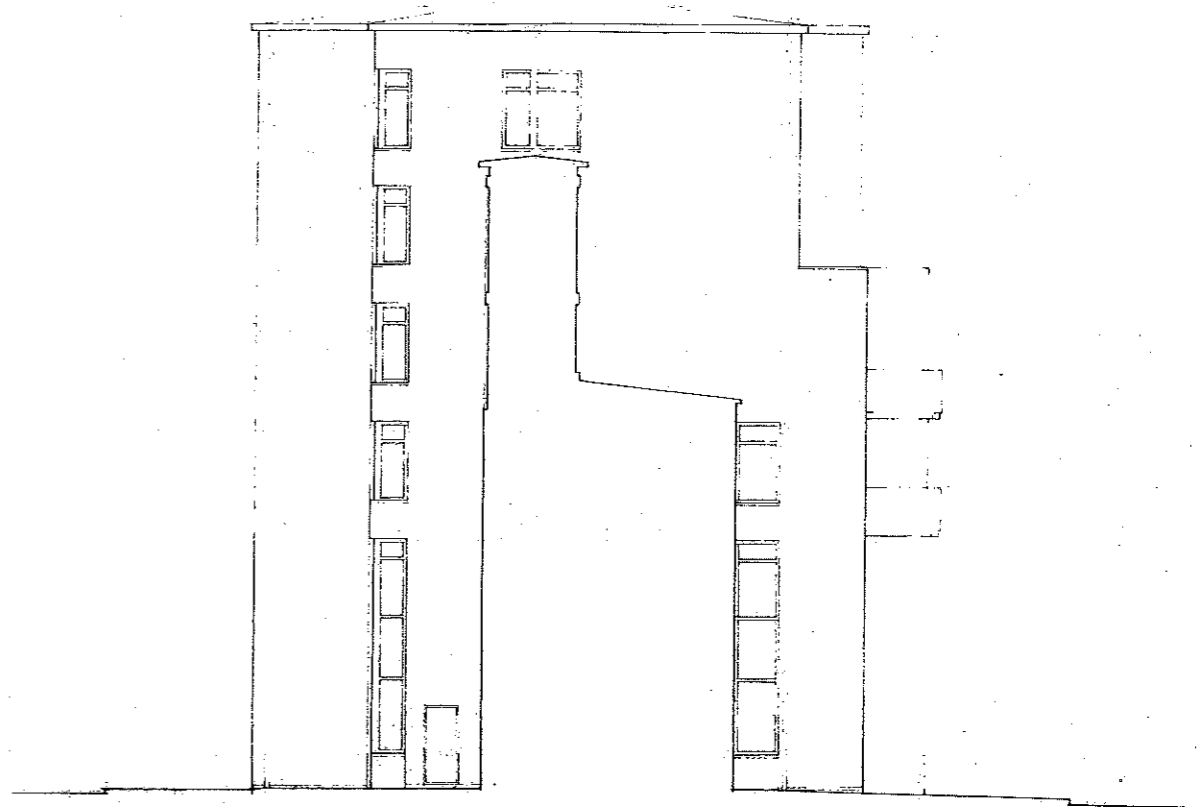
Postadress: Box 1180 - 511182 Stockholm
Förhållningsadress: Göndöstråti - SE-69142439
KONTORSHUS - K2 FASTIGHET F8
FASAD MOT GÅRD OCH INFARTSGATA



SKALA: 1:100 DATUM: 91-10-25 A2214
HANDL: TP ES

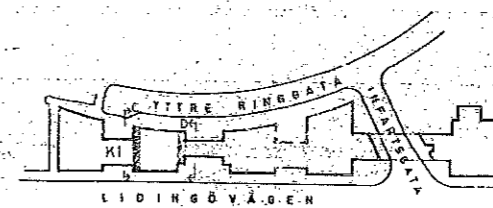


FASAD C-MOT ENTREGÅRD



FASAD D-MOT LÄNK

RELATIONSHANDLING



STARRBÄCKSÄNGEN



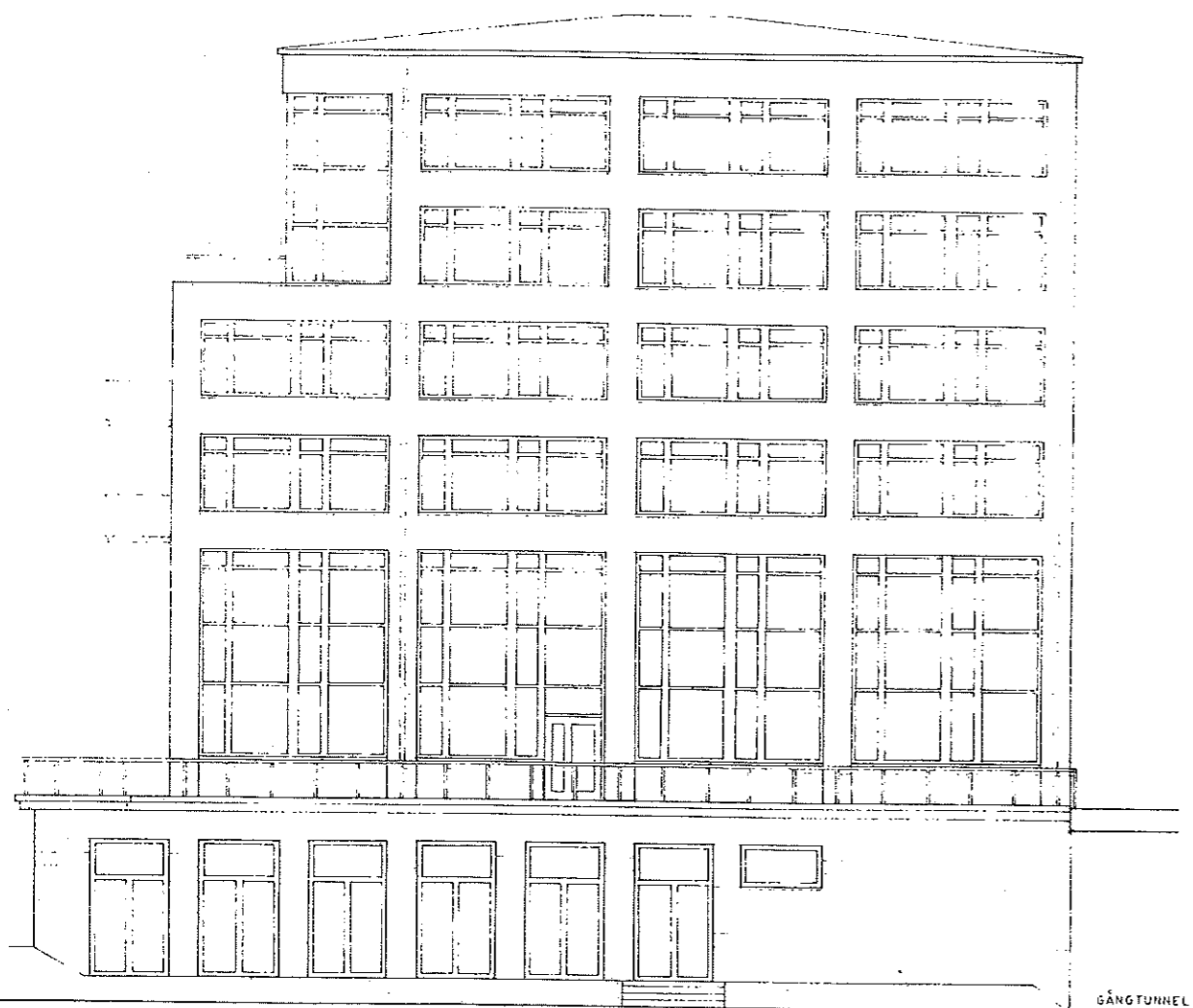
NYRÉN S
arkitektkontor ab

Perennius: Box 1292 - S-111 62 Stockholm
Folkaregistrerat - Örebro - Tel. 08-142450

KONTORSHUS K1 FASTIGHET F11
FASAD C - MOT ENTREGÅRD
FASAD D - MOT LÄNK

SKALA 1:100 DATUM 91-10-25 A-1117

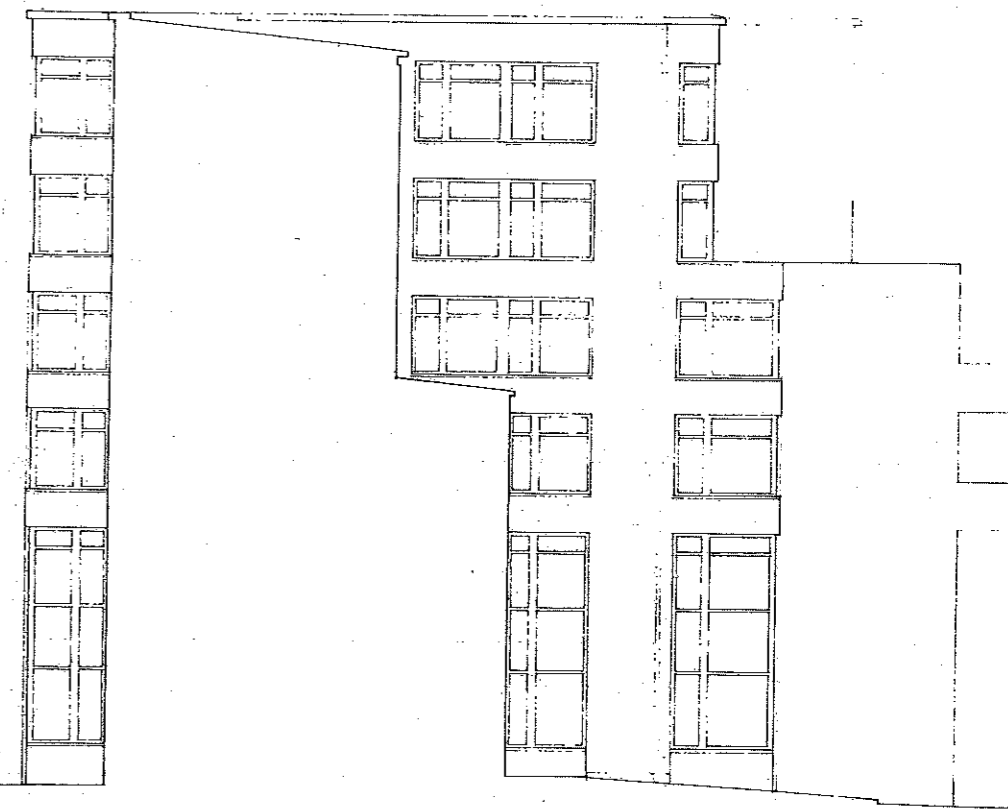
HANDTYP ES *Montoya*



FASAD A - MOT PARKVÄG

—B3

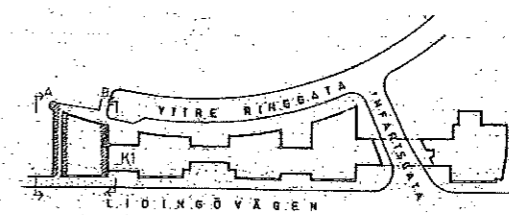
GÅNGTUNNEL



LIDINGÖVÄGEN

RELATIONSHANDLING

STARBACKSÅNGEN



Kbygg
 H. HENRIKZ
NYRÉN S
 arkitektkontor AB
 Fredrikss väg 1230 • S-111 82 Stockholm
 Telefon: 08-33 00 00 • Fax: 08-31 24 50
 KONTORSHUS K1 FASTIGHET F11
 FASAD A - MOT PARKVÄG
 FASAD B - MOT ENTREGÅRD
 SKALA 1:100
 DATUM 01-10-25
 A1116
 HANDL. TP ES